

PRO-SLICE®

The Perfect Fit for the Meat Processing Industry

PRO-SLICE SC-300 STRIP CUTTER



We provide
technical support and
service for all machines
that we sell.

MPBS INDUSTRIES

Equipment for Industrial Food Processing & Packaging

2820 East Washington Blvd. Los Angeles CA 90023
323-268-8514 ♦ 323-268-6305 (fax) ♦ www.mpbs.com
Hours: 8:00 - 4:30 PM
Se Habla Espanol



Since 1938

PRO-SLICE

SC-300 STRIP CUTTER

FEATURES

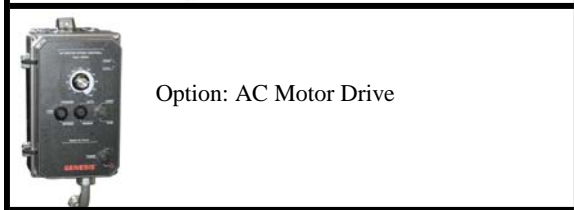
- Stainless steel housing
- Safety cover with micro-switch and plastic turn knob
- One set of strip cutting blades
- Easy cleaning and maintenance
- Energy efficient



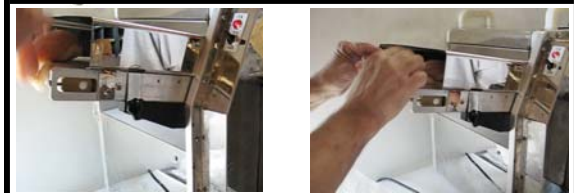
Strip Cutting Cradle



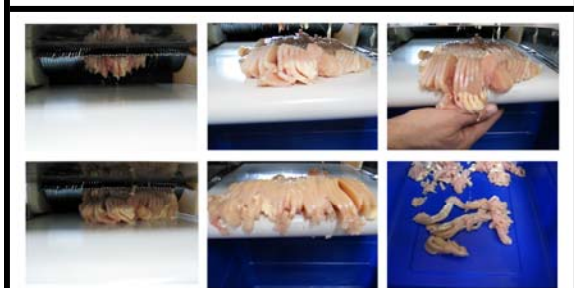
Stainless Steel Housing



Option: AC Motor Drive



Start feeding product onto the in-feed conveyor.



Product comes out on the discharge conveyor and slides down to the meat lug.

WARNING:

Always wear metal mesh gloves when handling strip cutting blades/cradle.

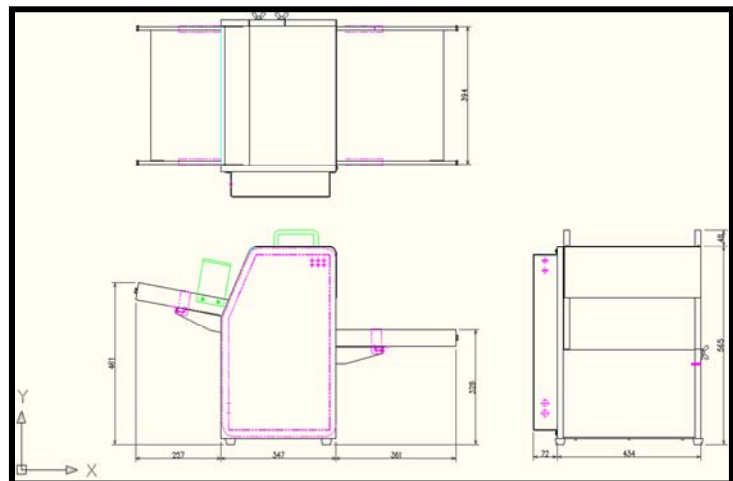
Do not wear metal mesh gloves when operating the strip cutter.

Make sure the strip cutter is off before doing maintenance.

Do not operate Pro-Slice SC-300 Strip Cutter without the s/s safety cover.

Technical Specifications	
Maximum belt speed	9.6' per minute
Electrical	220 V / 60 Hz / 1 Ø; 1/2 HP, 400 Watts
Capacity	1,900 - 2,400 lb/hr
Neoprene in-feed conveyor (L x W)	279 x 305 mm (11" x 12")
Overall dimensions (LxWxH)	506 x 965 x 612 mm (20" x 38" x 24")
Knife size	192 mm (7.56" diameter)
1 set of strip cutting blades (W)	6 mm (1/4"), 8 mm (1/3"), 10 mm (3/8"), 12 mm (1/2"), 18 mm (3/4"), 25 mm (1")
Weight	170 lb

* All specifications are subject to change without notice



Pro-Slice Strip Cutter

Distributed by: MPBS Industries